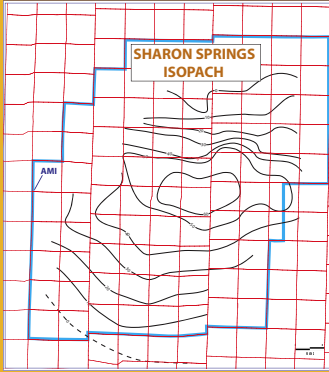


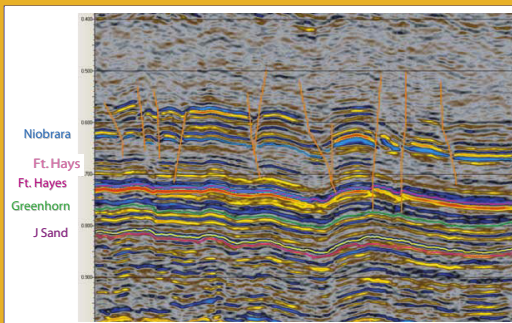
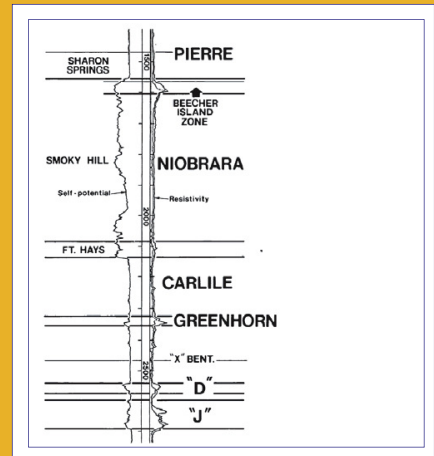
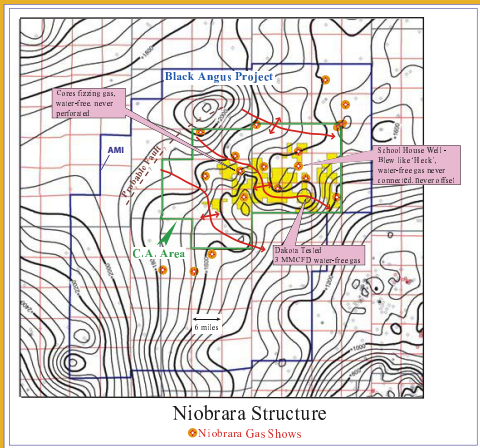
7+ TCFG POTENTIAL NEBRASKA DJ BASIN

SHARON SPRINGS MEMBER

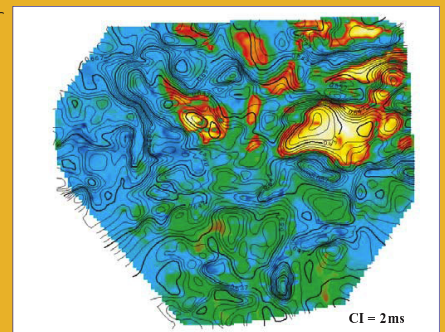


- Depth 2000 ft, thickness up to 60 ft
- Dark shale, TOC 13% in places
- Gas contents at least 70 SCFT
- Core recovered fizzing gas from a well that was P&A but never perf'd

NIOBRARA FORMATION



Analog
from
Eastern
Colorado



- Depth 2500 ft
- Multiple chalk & marl targets aggregate thickness 150'
- **THIS IS UNIQUE IN THE DENVER BASIN**
- Mud-log shows widespread throughout the area
- Biogenic gas, large structural closures
- Bright spots on 3D closures increase success rates dramatically
- Estimated EUR 2 BCF/well
- Completed frac'd well cost: Initial well est. \$700,000; multiple wells est. \$250,000

Terms:

- Project fee and ORRI.
- Buyer to acquire acreage or farmins
- Buyer to drill 1 well
- Confidentiality & non-compete agreement required
- Terms subject to change or withdrawal and all prospects subject to prior sale without notice